

# The C-MAC® FIVE S

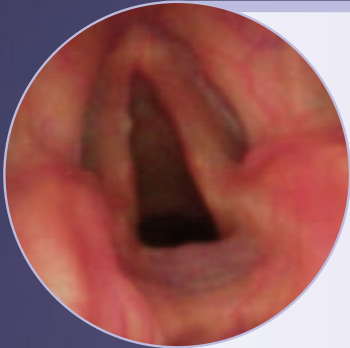
Premium class for single use



for single use

# The C-MAC® FIVE S

## Flexible Intubation Video Endoscopes for single use



### Excellent image quality

- Uses the same CMOS chip as the reusable FIVE
- Powerful LED at the distal tip provides balanced illumination of the entire work area
- Video imaging in 4:3 format – no tunnel vision
- Compatible with the C-MAC® Monitor and C-HUB® II



### Ergonomics tailored to your airway management

- Exceptional stiffness with very good guidance properties
- ETT with very good gliding properties due to the special sheath material
- For the placement of Endotracheal Tubes (ETT) as of size 4 mm
- For position check of Double Lumen Tubes (DLT)
- For airway inspection
- Practical tube fixation thanks to the special endoscope geometry



### The C-MAC® monitor

- 7" TFT wide angle view display (160°) with enhanced image quality
- Rapid toggling between video sources possible, e.g., with the C-MAC® S video laryngoscopes
- Documentation for data backup on SD and USB
- HDMI output for connection to an external monitor
- Brightness can be adjusted to ambient conditions within seconds



### The C-MAC® system

- System open to all C-MAC® components (forward and backward compatible)
- The C-MAC® and C-MAC® S video laryngoscopes, the FIVE or C-MAC® VS as well as C-CAM® can be connected for coupling all eyepiece endoscopes

## Maintaining high standards!

Although the new C-MAC® FIVE S is designed for single use, the endoscope fits seamlessly into the excellent image quality of the C-MAC® system. The outstanding rigidity of the sheath and the special anti-buckling protection at the distal tip provides the same convenient handling offered by the reusable FIVE endoscopes.

If you are looking for a complete airway management system, then there is only one solution:

## The C-MAC® System!

Now available



Not all the products listed in this document are certified according to Regulation 2017/745/EU. For this reason, some products requiring certification under this Regulation may not be available in these countries.

It is recommended to check the suitability of the product for the intended procedure prior to use.

The logo features the number '75' in a large, bold, blue sans-serif font. The '5' has a white circle in its center, resembling an endoscopic lens. Below the '75', the word 'Years' is written in a blue, cursive script font.

*Shaping the Future  
of Endoscopy with you*

**STORZ**  
**KARL STORZ—ENDOSKOPE**

*THE DIAMOND STANDARD*

KARL STORZ SE & Co. KG  
Dr.-Karl-Storz-Straße 34, 78532 Tuttlingen/Germany  
Postbox 230, 78503 Tuttlingen/Germany  
Phone: +49 7461 708-0  
Fax: +49 7461 708-105  
E-Mail: [info@karlstorz.com](mailto:info@karlstorz.com)  
[www.karlstorz.com](http://www.karlstorz.com)

